

AERODROME
CHART - ICAO

ARP 552614N 0054111W

AD ELEV 42FT

CAMPBELTOWN
EGEC



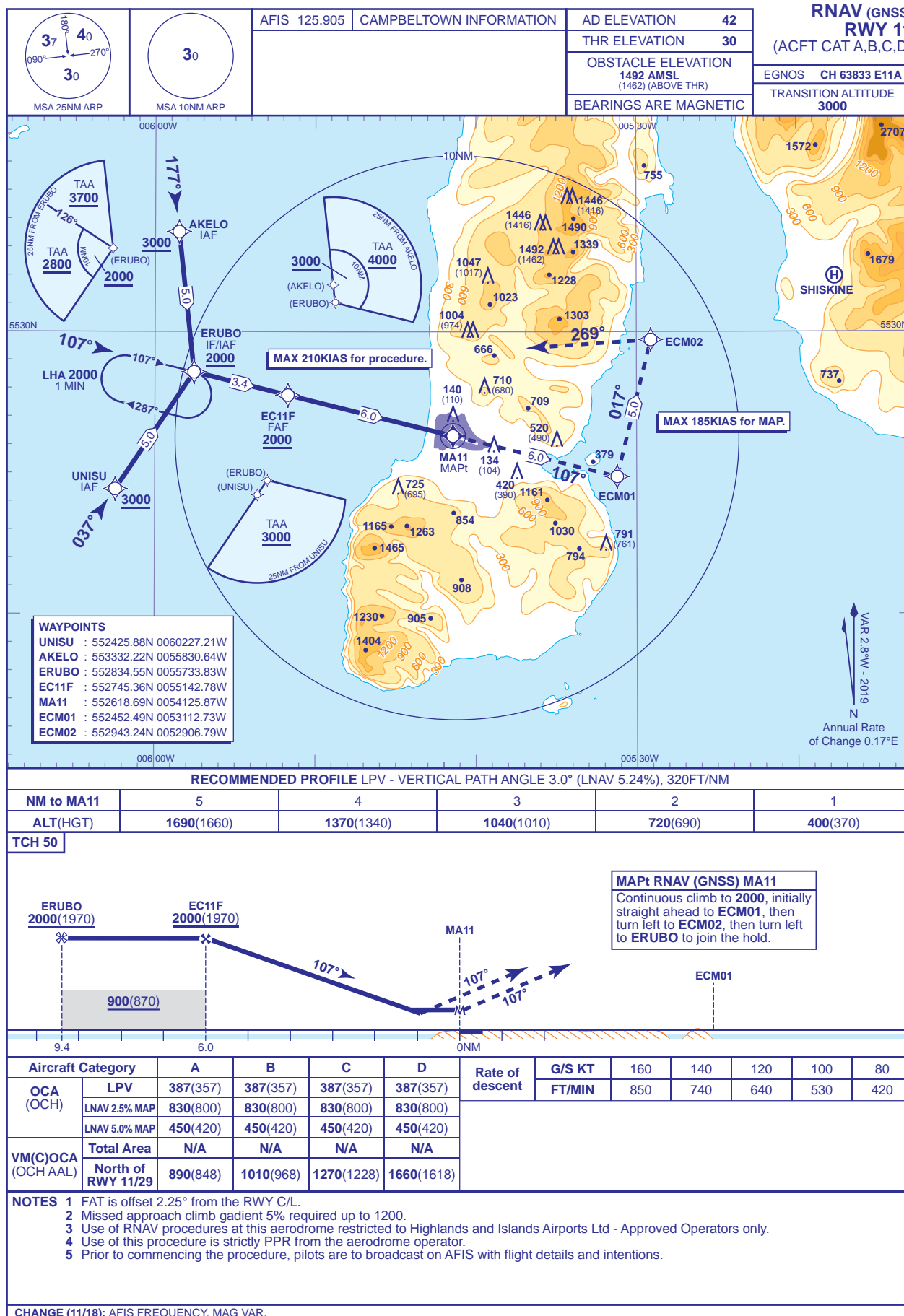
INSTRUMENT APPROACH CHART - ICAO

CAMPBELTOWN

RNAV (GNSS)

RWY 11

(ACFT CAT A,B,C,D)



AERO INFO DATE 27 JUN18

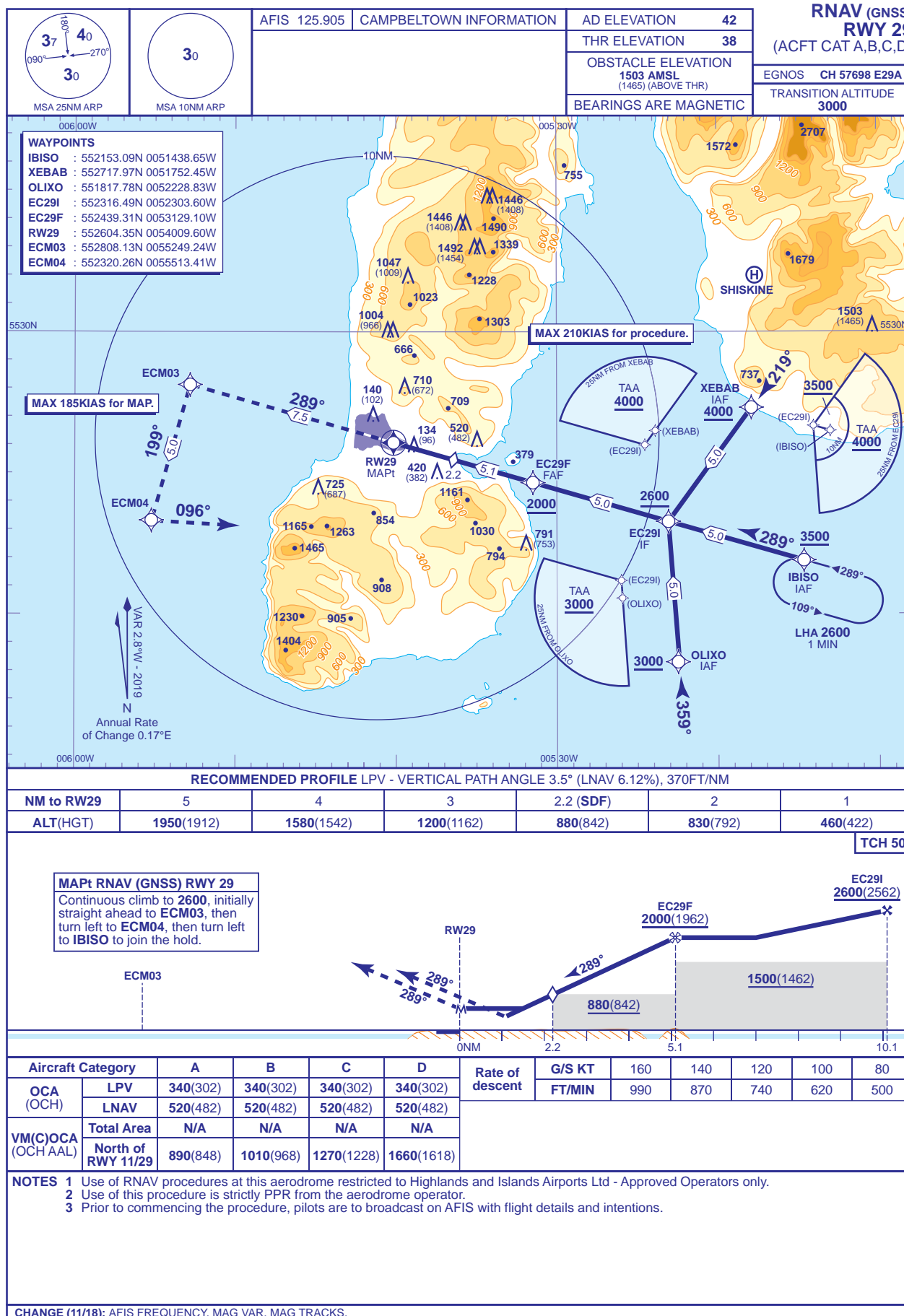
INSTRUMENT APPROACH CHART - ICAO

CAMPBELTOWN

RNAV (GNSS)

RWY 29

(ACFT CAT A,B,C,D)



AERO INFO DATE 27 JUN 18

EGEC — CAMPBELTOWN

EGEC AD 2.1 AERODROME LOCATION INDICATOR AND NAME

EGEC — CAMPBELTOWN

EGEC AD 2.2 AERODROME GEOGRAPHICAL AND ADMINISTRATIVE DATA

1	ARP coordinates and site at AD	Lat: 552615N Long: 0054117W Mid point of Runway 11/29.
2	Direction and distance from city	3 nm W of Campbeltown.
3	Elevation / Reference temperature	42 ft / 14 C
4	Geoid undulation at AD ELEV PSN	182 FT
5	Magnetic Variation/ Annual Change	2.82°W (2019) / 0.17°
6	AD Administration, address, telephone, telefax, AFS, e-mail address, website address	HIAL Post: Campbeltown Aerodrome, Campbeltown, Argyll, PA28 6NU. Phone: 01586-553797 Phone: 01586-553338 (AFS) Fax: 01586-552620
7	Type of Traffic permitted (IFR/VFR)	VFR
8	Remarks	

EGEC AD 2.3 OPERATIONAL HOURS

1	Aerodrome Operator	Mon-Fri 0820-1740 (0720-1640); (Sun (May-Sep) 1635-1730); and by arrangement with AD operator (HIAL).
2	Customs and Immigration	
3	Health and sanitation	
4	AIS Briefing Office	
5	ATS Reporting Office (ARO)	
6	MET Briefing Office	
7	Air Traffic Service	Mon-Fri 0800-1740 (0700-1640); (Sun (May-Sep) 1615-1730). See also AD 2.18.
8	Fuelling	
9	Handling	By arrangement with HIAL.
10	Security	On request.
11	De-icing	
12	Remarks	Prior Permission Required at this aerodrome. Arrival/Departure times may be allocated.

EGEC AD 2.4 HANDLING SERVICES AND FACILITIES

1	Cargo handling facilities	
2	Fuel and oil types	
3	Fuelling facilities/capacity	
4	De-icing facilities	
5	Hangar space for visiting aircraft	
6	Repair facilities for visiting aircraft	
7	Remarks	

EGEC AD 2.5 PASSENGER FACILITIES

1	Hotels	
2	Restaurants	

EGEC AD 2.5 PASSENGER FACILITIES (continued)

3	Transportation	
4	Medical facilities	Limited.
5	Bank and Post Office	
6	Tourist Office	
7	Remarks	

EGEC AD 2.6 RESCUE AND FIRE FIGHTING SERVICES

1	AD category for fire fighting	RFF Category A2
2	Rescue equipment	
3	Capability for removal of disabled aircraft	
4	Remarks	RFF Category 3 accepted under remission. RFF Category 4 available by prior arrangement.

EGEC AD 2.7 SEASONAL AVAILABILITY - CLEARING

1	Type of clearing equipment	Mechanical, Chemical de-icing.
2	Clearance priorities	Runways, Taxiway, Apron, Airport Domestic Area.
3	Remarks	Latest Information Contact, Tel: 01586-553797

EGEC AD 2.8 APRONS, TAXIWAYS AND CHECK LOCATIONS/POSITIONS DATA

1	Apron surface and strength	
2	Taxiway width, surface and strength	
3	Altimeter checkpoint location and elevation	
4	VOR checkpoints	
5	INS checkpoints	
6	Remarks	

EGEC AD 2.9 SURFACE MOVEMENT GUIDANCE AND CONTROL SYSTEM AND MARKINGS

1	Use of aircraft stand ID signs, TWY guide lines and visual docking/parking guidance system of aircraft stands	
2	Runway and taxiway markings and lighting	
3	Stop bars	
4	Remarks	

EGEC AD 2.10 AERODROME OBSTACLES

In Approach/Take-off areas						
Obstacle ID/Designation	Obstacle Type	Obstacle Position	Elevation/Height		Obstruction Lighting Type/Colour	Remarks
1	2	3	4		5	6
11/APPROACH 29/TAKE-OFF	Fence	552621.31N 0054118.16W	48 ft		No	
11/APPROACH 29/TAKE-OFF	Fence	552620.74N 0054122.86W	42 ft		No	
29/APPROACH 11/TAKE-OFF	House/Pole	552601.13N 0053938.80W	88 ft		Yes	

EGEC AD 2.10 AERODROME OBSTACLES (continued)

In Approach/Take-off areas						
Obstacle ID/Designation	Obstacle Type	Obstacle Position	Elevation/Height		Obstruction Lighting Type/Colour	Remarks
1	2	3	4		5	6
29/APPROACH 11/TAKE-OFF	Tree	552601.06N 0053935.29W	79 ft		No	
29/APPROACH 11/TAKE-OFF	Power Pole	552544.94N 0053730.32W	221 ft		No	

In circling area and at aerodrome						
Obstacle ID/Designation	Obstacle Type	Obstacle Position	Elevation/Height		Obstruction Lighting Type/Colour	Remarks
1	2	3	4		5	6
	Hill	553026.74N 0053443.07W	1303 ft		No	
	Hill	552908.85N 0053850.82W	666 ft		No	
	Hill	552719.48N 0053643.94W	709 ft		No	
	Wind Tur- bine	552638.26N 0053742.73W	222 ft		No	
	Hill	552313.19N 0053503.26W	1030 ft		No	
	Hill	552305.17N 0054514.96W	1165 ft		No	
	Hill	552221.62N 0054618.19W	1463 ft		No	

EGEC AD 2.11 METEOROLOGICAL INFORMATION PROVIDED

1	Associated MET Office	MET OFFICE ABERDEEN.
2	Hours of service MET Office outside hours	
3	Office responsible for TAF preparation Periods of validity	MET OFFICE ABERDEEN. 8 hours.
4	Trend forecast Interval of issuance	
5	Briefing/consultation provided	Self-briefing.
6	Flight documentation Language(s) used	Charts abbreviated plain language. TAFs and METARs. English.
7	Charts and other information available for briefing or consultation	Metforms 214 and 215.
8	Supplementary equipment available for providing infor- mation	Fax. Internet.
9	ATS units provided with information	
10	Additional information (limitation of service, etc.)	During airport opening hours only.

EGEC AD 2.12 RUNWAY PHYSICAL CHARACTERISTICS

Designations RWY Number	True bearing	Dimensions of RWY	Surface of RWY/ SWY/ Strength (PCN)	THR co-ordinates/ THR Geoid undu- lation	THR elevation/ Highest elevation of TDZ of precision APP RWY
1	2	3	4	5	6
11	106.05°	1750 x 46 m	RWY surface: Asphalt.	552616.98N 0054126.68W 182 ft	THR 30 ft
29	286.09°	1750 x 46 m	RWY surface: Asphalt.	552604.33N 0054009.45W 182 ft	THR 38 ft

EGEC AD 2.12 RUNWAY PHYSICAL CHARACTERISTICS (continued)

Slope of RWY/ SWY	SWY dimensions	Clearway dimensions	Strip Dimensions	OFZ	Remarks
7	8	9	10	11	12
					RWY 11 Threshold displaced by 172 m.
					RWY 29 Threshold displaced by 402 m.

EGEC AD 2.13 DECLARED DISTANCES

Runway designator	TORA	TODA	ASDA	LDA	Remarks
1	2	3	4	5	6
11	1750 m	1750 m	1750 m	1500 m	
29	1750 m	1750 m	1750 m	1500 m	Note due to inset thresholds actual length of operational pavement is 1966 m.

EGEC AD 2.14 APPROACH AND RUNWAY LIGHTING

RWY	Approach lighting Type/Length/Intensity	Threshold lighting Colour/Wing bars	VASIS/MEHT/PAPI	TDZ lighting Length	Runway Centre Line lighting Length/Spacing/Colour/Intensity	Runway edge lighting Length/Spacing/Colour/Intensity	Runway end lighting Colour/Wing bars	Stopway lighting Length/Colour	Remarks
1	2	3	4	5	6	7	8	9	10
11		Portable Electric	APAPI Left/3°			Portable Electric			Portable LED lighting during hours of darkness only.
29		Portable Electric	APAPI Left/3.5°			Portable Electric			Portable LED lighting during hours of darkness only.

EGEC AD 2.15 OTHER LIGHTING, SECONDARY POWER SUPPLY

1	ABN/IBN location, characteristics and hours of operation	
2	LDI location and lighting Anemometer location and lighting	
3	TWY edge and centre line lighting	
4	Secondary power supply/switch-over time	
5	Remarks	Obstacle light on VCR.

EGEC AD 2.16 HELICOPTER LANDING AREA**INTENTIONALLY BLANK****EGEC AD 2.17 AIR TRAFFIC SERVICES AIRSPACE**

Designation and lateral limits	Vertical Limits	Airspace Class	ATS unit callsign/language	Transition Altitude	Remarks
1	2	3	4	5	6
CAMPBELTOWN ATZ A circle, 2 nm radius centred at 552615N 0054117W on longest notified runway (11/29)	Upper limit: 2000 ft Lower limit: SFC	G	CAMPBELTOWN INFORMATION English	3000 ft	

EGEC AD 2.18 AIR TRAFFIC SERVICES COMMUNICATION FACILITIES

Service Designation	Callsign	Channel(s)	Hours of Operation	Remarks
1	2	3	4	5
AFIS	CAMPBELTOWN INFORMATION	125.905 MHz DOC 40 nm/15,000 ft.	Mon-Fri 0800-1740 (0700-1640); (Sun (May-Sep) 1615-1730).	ATZ hours coincident with AFIS hours. AFIS also available by arrangement with AD operator (HIAL).

EGEC AD 2.19 RADIO NAVIGATION AND LANDING AIDS

Type of Aid CAT of ILS/MLS (For VOR/ILS/MLS, give VAR)	Ident	Frequency	Hours of Operation	Position of transmitting antenna co-ordinates	Elevation of DME transmitting antenna	Remarks
1	2	3	4	5	6	7
NDB	CBL	380.000 kHz	Mon-Fri 0800-1740 (0700-1640).	552608.27N 0054117.06W		On AD. Range 15 nm. Normally radiates H24.
DME/VOR	MAC	107X 116.000 MHz	H24	552548.08N 0053901.49W	95 ft	MAC VOR DOC: 30 NM/50000 FT. Due to terrain, coverage at low level is reduced in Sectors R123°-163°, R208°-238° and R348°-083°. VOR declination 3.4° W

EGEC AD 2.20 LOCAL TRAFFIC REGULATIONS

1 Airport Regulations

- (a) Not available to aircraft unable to communicate by radio.
- (b) Use of Campbeltown aerodrome is subject to standard Terms and Conditions of Use, which can be requested from the aerodrome.
- (c) Use of RNAV procedures at this aerodrome restricted to Highlands and Islands Airports Ltd - Approved Operators only.
- (d) Use of this procedure is strictly PPR from the aerodrome operator.
- (e) Prior to commencing the procedure, pilots are to broadcast on AFIS 125.905 MHz with flight details and intentions.

2 Ground Movement

Not applicable

3 CAT II/III Operations

Not applicable

4 Warnings

- (a) No ground signals.
- (b) Bird activity may be seasonally high. From October until March, large flocks of geese are prevalent in the vicinity of the aerodrome, especially Runway 29 approach.
- (c) Deer activity may take place on the aerodrome, pilots will be advised of any hazard.
- (d) Perimeter fence obstruction at western end of Runway. Aircraft back-tracking/taxiing beyond, i.e. to the west of Runway 11 displaced threshold, should proceed with caution because of the 8 ft high perimeter fence immediately beyond the end of the paved runway surface.
- (e) Pilots are reminded of the close proximity of disused parallel taxiway to the south of Runway 11/29, which is outside of the airport boundary fence and not available for landing/taxiing purposes.
- (f) Traffic carrying out GNSS approaches to Runway 31 at Islay will pass approximately 2 nm North of Campbeltown GNSS 11 Hold. Islay Airport is situated approximately 24 nm northwest of Campbeltown. Departures/arrivals may trigger TCAS

EGEC AD 2.20 LOCAL TRAFFIC REGULATIONS (continued)

warnings due to the close proximity of GNSS and VOR/DME approaches. Pilots are reminded that Instrument Approach Procedures at Campbeltown are restricted to Highlands and Islands Airports Ltd - Approved Operators only.

- (g) Aircraft may be backtracking or taxiing the runway in use, after landing roll or for take-off.

5 Helicopter Operations

Not applicable

6 Use of Runways

- (a) Runway departure restriction for aircraft requiring the use of a licensed aerodrome:

- (i) **Runway 11/29:** Except where an AOC holder has a less restrictive State authorised take-off minima, departures when the reported MET visibility is 400 m or less are not permitted.

7 Training

Not applicable

EGEC AD 2.21 NOISE ABATEMENT PROCEDURES

Not applicable

EGEC AD 2.22 FLIGHT PROCEDURES

Not applicable

EGEC AD 2.23 ADDITIONAL INFORMATION

Not applicable

EGEC AD 2.24 CHARTS RELATED TO AN AERODROME

Figure: AERODROME CHART - ICAO

AD 2-EGEC-2-1

Figure: INSTRUMENT APPROACH CHART RNAV (GNSS) RWY 11 - ICAO

AD 2-EGEC-8-1

Figure: INSTRUMENT APPROACH CHART RNAV (GNSS) RWY 29 - ICAO

AD 2-EGEC-8-2

Figure: INSTRUMENT APPROACH CODING TABLES RNAV (GNSS) RWY 11 - ICAO

AD 2-EGEC-8-3

Figure: SBAS FAS DATA BLOCK CODING DATA RNAV (GNSS) RWY 11 - ICAO

AD 2-EGEC-8-4

Figure: INSTRUMENT APPROACH CODING TABLES RNAV (GNSS) RWY 29 - ICAO

AD 2-EGEC-8-5

Figure: SBAS FAS DATA BLOCK CODING DATA RNAV (GNSS) RWY 29 - ICAO

AD 2-EGEC-8-6