

# Marianas

## 'Smart Pack'

MIRC: Special Use Airspace, AAR Tracks

2

R-7201: Farallon de Medinilla Bombing Range

4

### Andersen AFB Charts:

Ground

5

Parking

6

Departure, Overhead

8

TACAN Approach 06L, 06R

9

TACAN Approach 24L, 24R

10

ILS or WYPT Approach 06L, 06R

11

ILS or WYPT Approach 24L, 24R

12

**MIRAGE**

AREN  
15°40N  
146°12E  
ARIP  
16°01N  
146°24E  
RACETRACK\*  
ARCP  
16°53N  
146°20E  
AREX  
15°30N  
146°21E

COMM, TCN:  
**271.525**  
**63Y**

---

**FDM/R-7201** D158 UAM  
16°01N  
146°03E

GND-FL600  
Farallon  
De Medinilla

PRIMARY BOMBING RANGE      PRIMARY LIVE ORDNANCE JETTISON AREA

EMERGENCY JETTISON OUTSIDE OF R-7201:

- 2000 ft AGL OR ABOVE
- 12 nm FROM ANY LAND MASS
- CLEAR OF SURFACE VESSELS

**LUXOR**

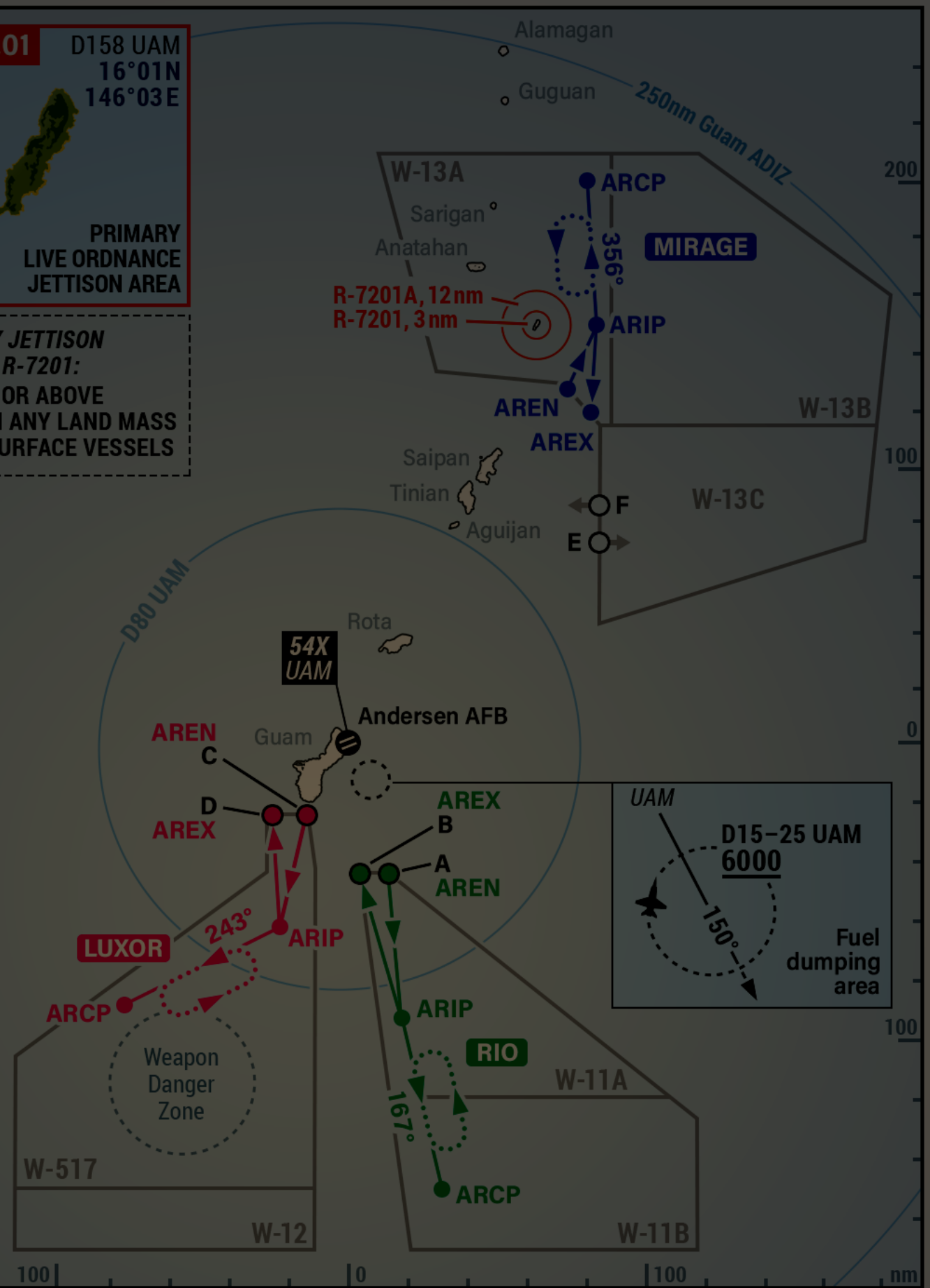
AREN  
13°10N  
144°42E  
ARIP  
12°30N  
144°33E  
RACETRACK\*  
ARCP  
12°02N  
143°37E  
AREX  
13°10N  
144°30E

COMM, TCN:  
**369.500**  
**29Y**

**RIO**

AREN  
12°50N  
145°10E  
ARIP  
12°00N  
145°15E  
RACETRACK\*  
ARCP  
11°00N  
145°30E  
AREX  
12°50N  
145°00E

COMM, TCN:  
**236.275**  
**92Y**

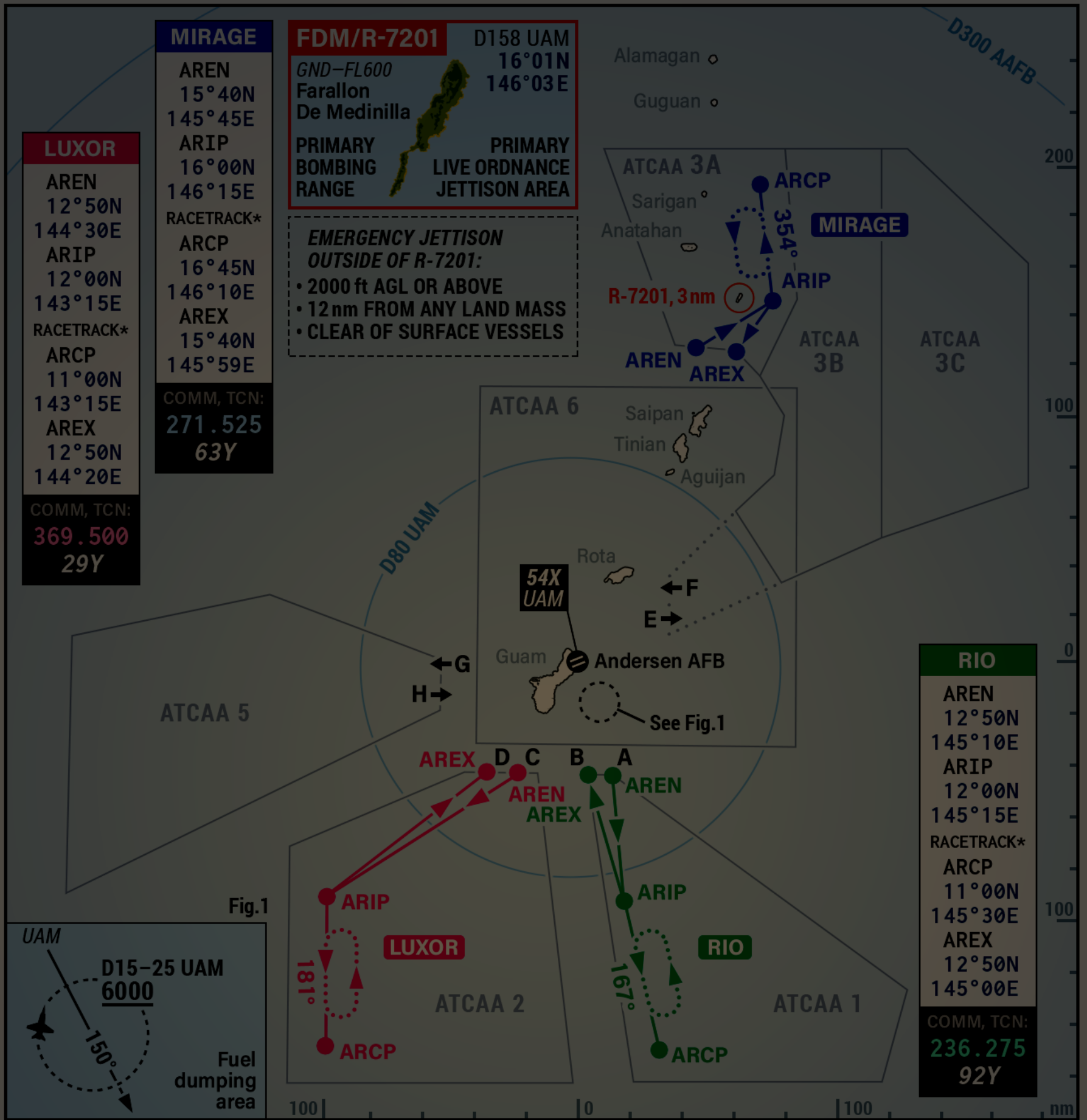


AIRSPACE:	W-11 A/B	W-517, W-12	W-13 A/B/C
ENTRY POINT:	ALFA 12°50N / 145°10E	CHARLIE 13°10N / 144°42E	ECHO 14°44N / 146°25E
EXIT POINT:	BRAVO 12°50N / 145°00E	DELTA 13°10N / 144°30E	FOXTROT 14°55N / 146°25E

SPECIAL USE AIRSPACE / MILITARY TRAINING RANGES BOUNDARY COORDINATES

W-13A	W-13B	W-13C	W-517	W-12	W-11A	W-11B
SURF-FL600	SURF-FL600	SURF-FL600	SURF-UNLIM	SURF-UNLIM	SURF-FL300	SURF-FL300
1: 17°00N 145°05E	1: 17°00N 146°28E	1: 15°25N 146°25E	1: 13°10N 144°30E	5: 11°00N 143°00E	1: 12°50N 145°00E	1: 11°32N 145°11E
2: 17°00N 146°28E	2: 17°00N 147°00E	2: 15°25N 148°04E	2: 13°10N 144°42E	6: 11°45N 143°00E	2: 12°50N 145°10E	2: 11°32N 146°50E
3: 15°25N 146°28E	3: 16°10N 148°10E	3: 14°45N 148°00E	3: 12°50N 144°45E	7: 12°50N 144°30E	3: 11°32N 146°50E	3: 11°25N 147°00E
4: 15°25N 146°25E	4: 15°25N 148°04E	4: 14°16N 146°25E	4: 11°00N 144°45E	4: 10°30N 143°00E	4: 11°32N 145°11E	4: 10°30N 147°00E
5: 15°40N 146°12E	5: 15°25N 146°28E					5: 10°30N 145°20E
6: 15°44N 145°27E						

\* The actual orbit (racetrack) waypoint needs to be placed approx. halfway between ARIP and ARCP



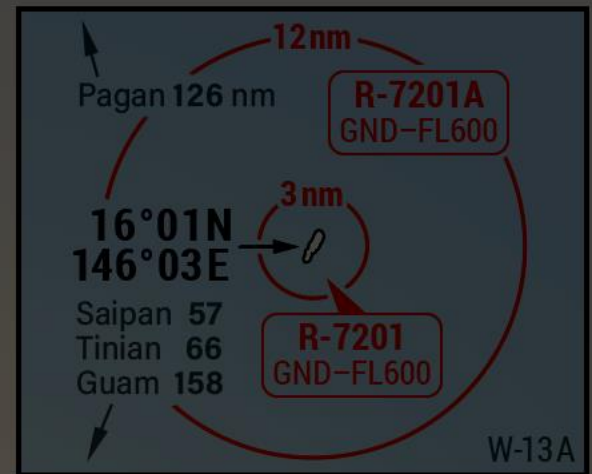
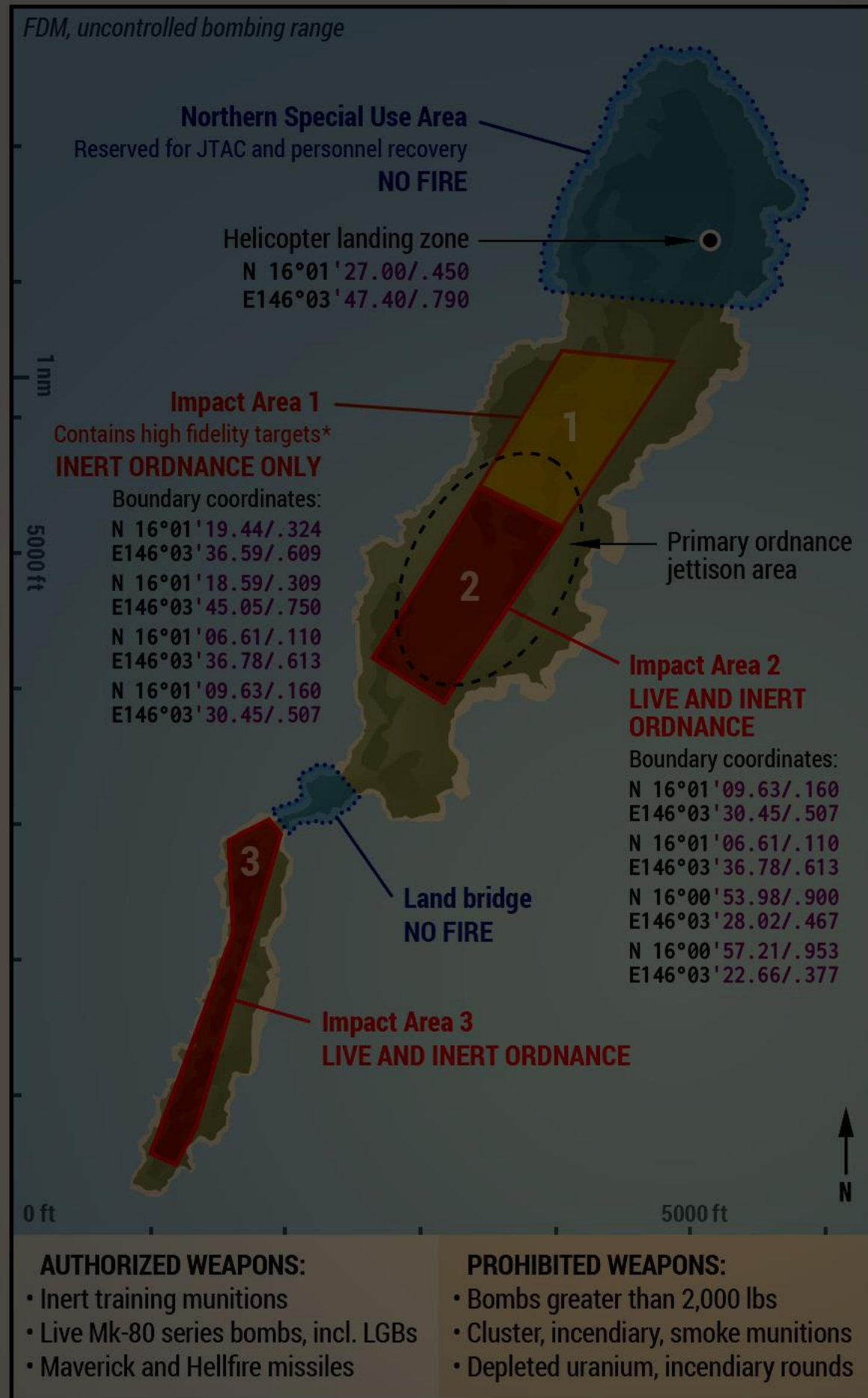
AIRSPACE:	ATCAA 1	ATCAA 2	ATCAA 3 A/B/C	ATCAA 5
ENTRY POINT:	A 12°50N / 145°10E	C 12°50N / 144°30E	E 13°51N / 145°34E	G 13°35N / 144°00E
EXIT POINT:	B 12°50N / 145°00E	D 12°50N / 144°20E	F 14°05N / 145°34E	H 13°20N / 144°00E

AIR TRAFFIC CONTROL ASSIGNED AIRSPACE (ATCAA) BOUNDARY COORDINATES

ATCAA 1	ATCAA 2	ATCAA 3A	ATCAA 3B	ATCAA 3C	ATCAA 5	ATCAA 6
SURF-UNLIM	SURF-UNLIM	SURF-UNLIM	SURF-FL300	SURF-UNLIM	SURF-FL300	FL390-FL430
1: 12°50N 145°10E	1: 12°50N 144°10E	1: 17°00N 145°05E	1: 17°00N 146°20E	7: 15°14N 146°20E	1: 17°00N 147°00E	1: 13°35N 144°00E
2: 11°25N 147°00E	2: 12°50N 144°40E	2: 17°00N 146°20E	2: 17°00N 147°00E	8: 15°30N 146°10E	2: 17°00N 147°10E	2: 13°15N 144°00E
3: 10°30N 147°00E	3: 10°30N 144°55E	3: 16°00N 146°25E	3: 14°25N 147°00E	9: 16°00N 146°25E	3: 16°15N 148°00E	3: 12°00N 141°30E
4: 10°30N 145°20E	4: 10°30N 143°00E	4: 15°30N 146°10E	4: 14°07N 146°19E	4: 14°45N 148°00E	4: 14°45N 148°00E	4: 13°42N 141°30E
5: 12°50N 145°00E	5: 12°20N 143°00E	5: 15°40N 146°00E	5: 14°35N 146°00E	5: 14°25N 147°00E	5: 14°25N 147°00E	5: 14°00N 142°50E
		6: 15°42N 145°35E	6: 14°50N 146°16E			

\* The actual orbit (racetrack) waypoint needs to be placed approx. halfway between ARIP and ARCP





**COMMS:**

- Flight lead makes a call prior to entry into W-13A, to de-conflict the airspace.
- Prior to delivering ordnance, each pilot makes a call on Guard (243.0) declaring the target "hot" with evolution duration.
- Pilot must report any ordnance landed outside of the Impact Areas 1/2/3.

**R-7201 RANGE CLEARANCE:**

- Each aircraft must make a clearance pass at 1,000 ft AGL (or higher – if equipped with targeting pod) prior to engaging targets.

**Clearance passes are not required if:**

- The range was cleared within the last ten minutes.
- The range was cleared by a JTAC or a dedicated mission safety observer (normally the flight lead).

**WEAPON EMPLOYMENT:**

- All ordnance must impact land.
- No targeting of any land outside of the designated Impact Areas 1/2/3.
- **Missile firing direction is from the west towards the island only.**

**JETTISONED ORDNANCE IMPACT:**

- **Primary:** at the center of the island, avoiding the Northern SUA.
- **Alternate:** at location at least 12 nm from any land mass.

**IMPACT AREA 1 TARGETS\***

**Inert ≤100 lbs only, no strafing:**

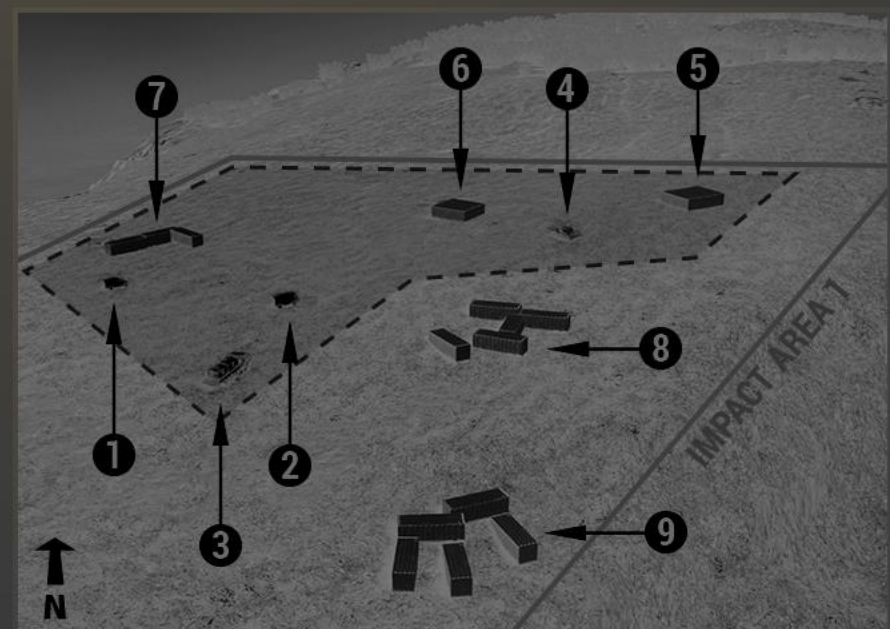
1. Vehicle 185 ft N16°01'16.32/.272 E146°03'38.69/.644
2. Vehicle 190 ft N16°01'15.87/.264 E146°03'39.75/.662
3. Vehicle 186 ft N16°01'14.95/.249 E146°03'39.59/.659
4. Vehicle 201 ft N16°01'16.80/.280 E146°03'41.40/.690
5. Rectangle 201 ft N16°01'17.62/.293 E146°03'42.35/.705
6. Square 198 ft N16°01'17.44/.290 E146°03'40.73/.678
7. L-shaped 182 ft N16°01'17.33/.288 E146°03'38.67/.644

**Inert ≤500 lbs only, no strafing:**

8. H-shaped 187 ft N16°01'15.58/.259 E146°03'41.02/.683

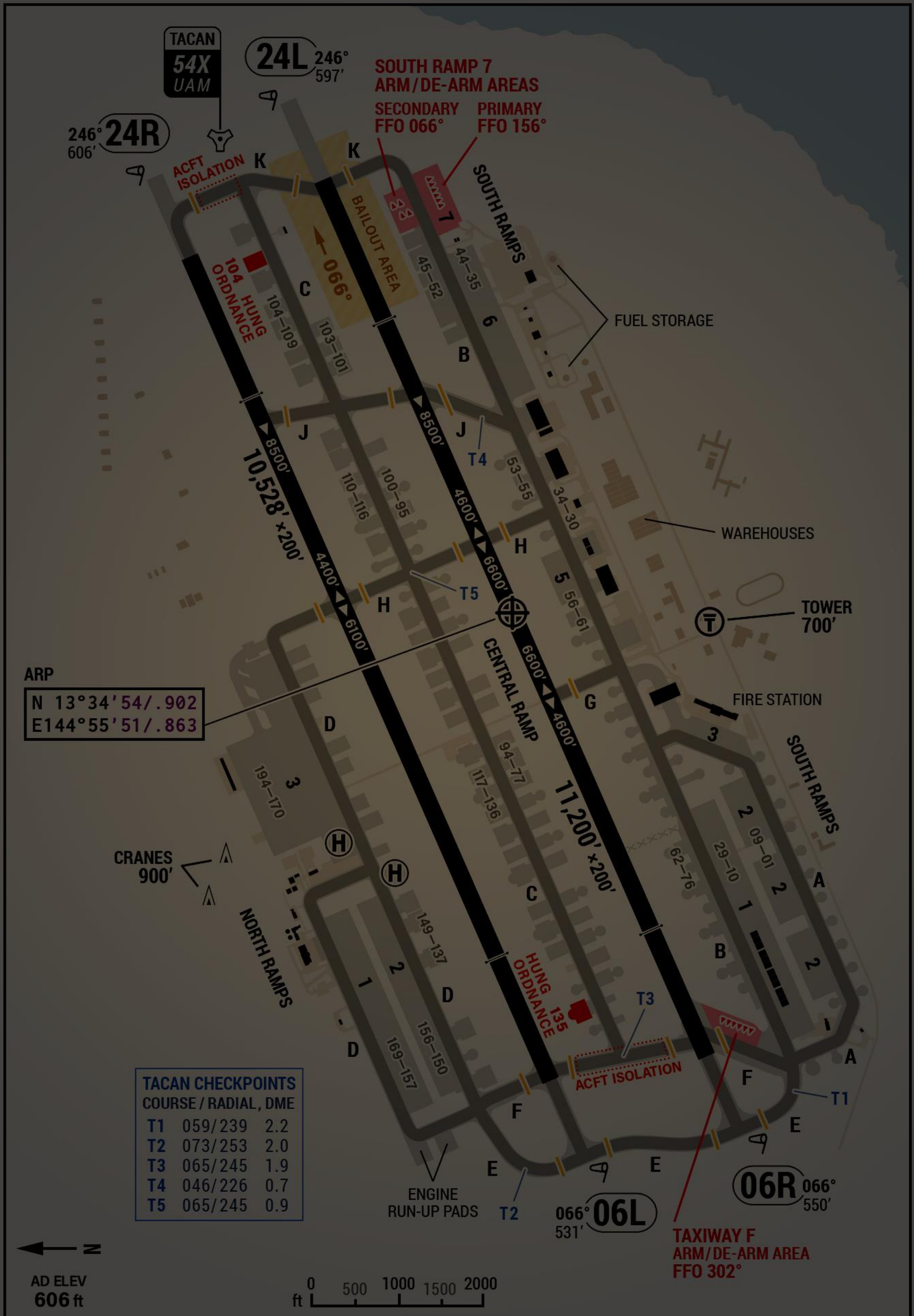
**Inert ≤2000 lbs only, strafing authorized:**

9. E-shaped 160 ft N16°01'13.93/.232 E146°03'40.60/.676



\* The targets and triggers to remove the default DCS scenery and trees must be placed by the mission designer.





TACAN  
**54X**  
 UAM

**24L** 246°  
 597'

**24R** 246°  
 606'

**SOUTH RAMP 7  
 ARM/DE-ARM AREAS**  
 SECONDARY FFO 066°  
 PRIMARY FFO 156°

ARP  
 N 13°34'54"/.902  
 E 144°55'51"/.863

**TACAN CHECKPOINTS**  
 COURSE / RADIAL, DME

T1	059/239	2.2
T2	073/253	2.0
T3	065/245	1.9
T4	046/226	0.7
T5	065/245	0.9



AD ELEV  
 606 ft



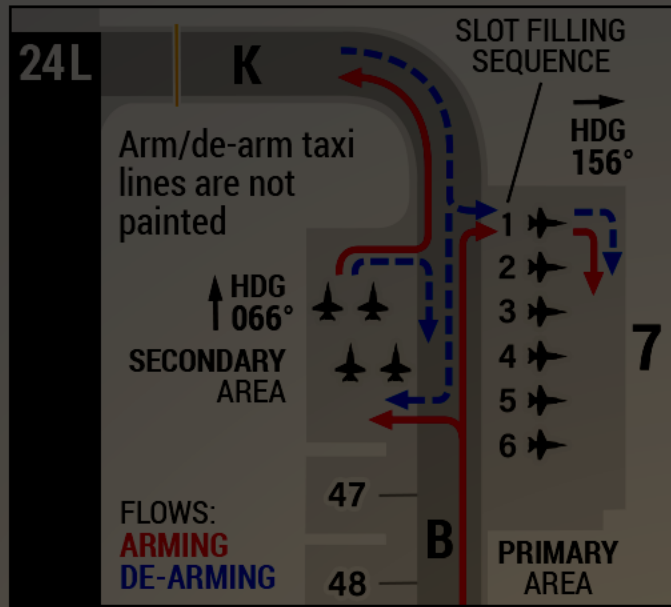
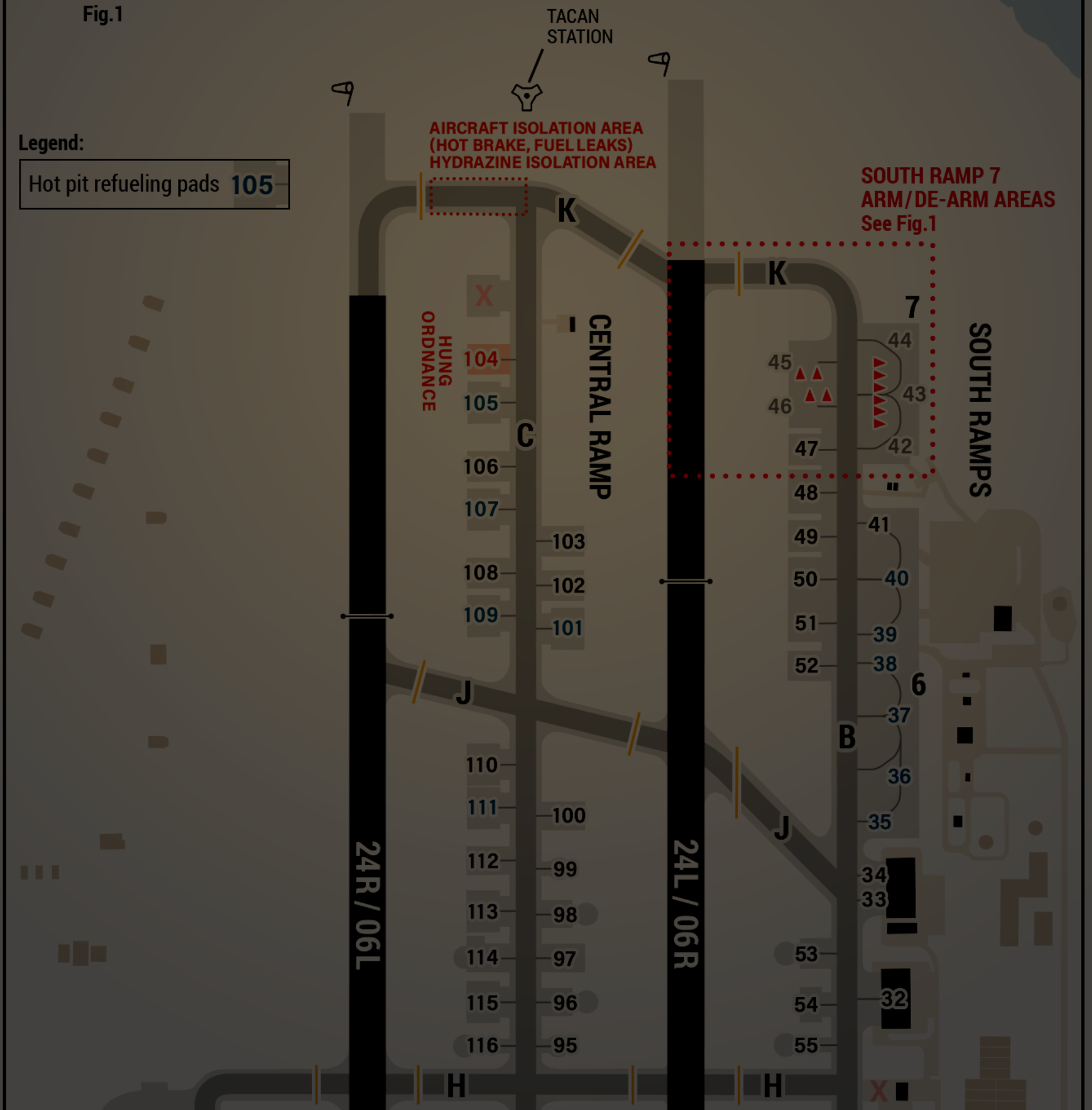


Fig.1

Legend:

Hot pit refueling pads 105



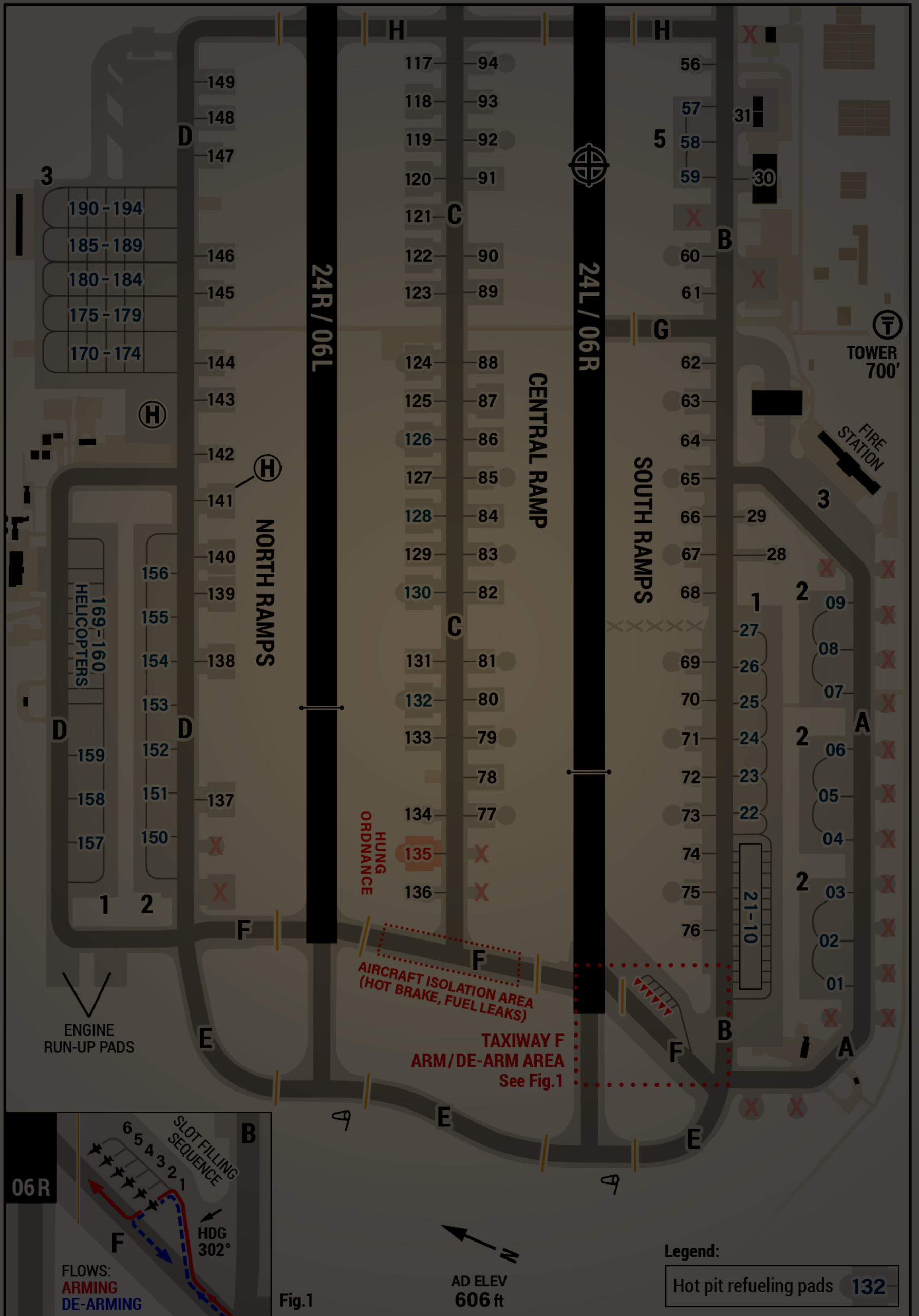


Fig.1

Legend:

Hot pit refueling pads 132



